



Predator MDC™

MANUFACTURING DATA COLLECTION



Reduce or Eliminate:

- Set up time
- Downtime
- Scrap

Improve:

- Job planning and quoting accuracy
- Personnel productivity
- Machine and resource usage
- Maintenance planning

Collect shop floor data, including:

- Set up time
- Cycle time
- Scrap
- Personnel time
- Break time
- Meeting time
- Preventive maintenance
- Machine downtime
- Tooling downtime
- Gauging downtime
- Material downtime
- Personnel downtime
- And more

Monitor

your shop floor
and improve



GEARED FOR MANUFACTURING™

Predator MDC™



35 Upgradeable Configurations:

MDC/1 MDC/2
MDC/4 MDC/8
MDC/16... MDC/256

Standard Features:

- Manufacturing Data Collection
- Realtime Answers
- Flexible Data Collection
- Manufacturing-Specific Data Collection
- Reports and Graphs
- Database Flexibility
- Integrated Solution
- MDC Clients
- Data Collection Objects
- On-line Help

Optional Features:

- Machine Monitoring
- Custom Reports and Charts
- Oracle
- SQL
- VB SDK
- JAVA SDK
- C++ SDK

Manufacturing Data Collection

Need to track personnel and monitor your machine tool activity? Predator MDC (Manufacturing Data Collection), collects and reports on your three most important resources, your jobs, people, and machines. Milliseconds after the data is input, it becomes available enterprise-wide via reports and charts that accurately reflect the current state of shop floor productivity. For example, the Machine Status report displays the current state of every machine including if it is idle, in setup, production, or down. In addition, it displays the current job number and machine operator. Predator MDC can simultaneously monitor up to 256 CNCs per PC.

Realtime Answers

Have questions about your shop floor productivity? With the motto, "You can only improve what you measure," Predator MDC helps improve manufacturing processes by empowering decision makers with answers to many of manufacturing's toughest questions.

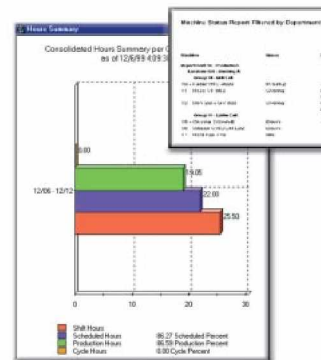
- *What jobs or parts are actually in production?*
- *How many pieces have been scrapped?*
- *Who is currently making parts? Which Shift?*
- *How is production time used?*
- *Which machines are actually making parts? In setup? Down? Or idle?*
- *What stops production?*
- *What does downtime cost?*

Answers to the above can be displayed from any PC with the ability to drill down to any level of detail. For example, a manufacturing engineer in the United States can query the status of an individual machine in Mexico to find out if it is currently in setup, making parts or down for maintenance. Answers are kept indefinitely and current results can be compared with previous job or part runs. Realtime answers leveraged against actual production history is becoming critical as enterprises go global. Answers based on actual manufacturing details facilitate faster decisions and increase productivity for every manufacturer.

Optional Machine Monitoring

Want to automate your data collection methods? Combine Predator MDC with Predator DNC™ or Predator Desktop™ to leverage your existing DNC network for automatic software-based machine monitoring. Your existing Predator bar code readers, DNC hubs, Flex series hubs, Grizzly Cable™, and other appropriate network components are extended to support MDC. Predator MDC's software-based machine monitoring solves many problems that are inherent to hardware-based monitoring. The Predator-based solution is open and not proprietary. It is easy to install, and eliminates cutting wires in your CNC control, voiding warranties, and ongoing maintenance concerns. Automatic data collection improves the accuracy of the data and minimizes the amount of input necessary from shop floor personnel.

With MDC, shop floor data can be captured from a number of sources including your CNC, a bar code reader, or your PC. Once the data is collected, MDC can help you organize the information and analyze it using one of more than 50 reports and graphs.



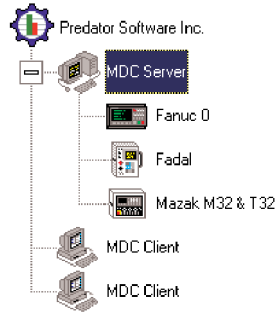


CNC Compatible:

- Allen Bradley
- Anilam
- Bandit
- Bendix
- Bridgeport
- Bosch
- Bostomatic
- Centurion
- Centroid
- Cincinnati Millicron
- Deckel
- Dynapath
- Emco
- Fadal
- Fagor
- Fanuc
- Fidia
- General Electric
- Giddings & Lewis
- Haas
- Heidenhain
- Hurco
- Kerney & Trecker
- Light
- Maho
- Mazak
- MDSI
- Mitsubishi
- Moog
- NUM
- Okuma
- Prototrak
- Roland
- Sharnoa
- Siemens
- Toshiba
- Vickers
- Yasnac

MDC Clients Want client PCs to collect data or run reports? On

the shop floor, Predator MDC clients can collect data in a realtime or summarized method. In addition, engineers or management can use Predator MDC clients to run reports or graphs. An unlimited number of MDC clients can be run simultaneously or work together with other Predator client applications. MDC Clients work within your network structure and include full security so you can control who has access to input or report on the information.



Data Collection Objects Need to collect data from a wide range of resources? Optionally, date and time stamp everything that's important to you. Predator MDC leverages the power of Predator DNC's or Desktop's unique command wizard and object manager to create specific data collection functionality to match your requirements.

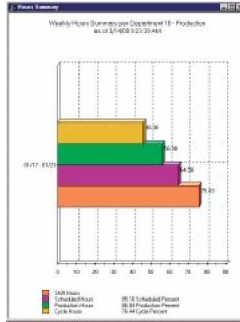
Custom Data Collection Have a custom or unique requirement?

Predator MDC offers several optional SDKs, or software development kits, to enable anyone familiar with Visual Basic, Java or C++ to interface other applications, create custom MDC objects, or develop specific shop floor solutions. With our unique command wizard you will be able to

leverage all of Predator MDC's existing capabilities and only develop what is necessary for your specific requirements.

Custom Reports and Charts Want to create your own reports or charts? Custom reports and graphs that

compare estimated data from accounting, ERP or MRP systems versus actual data can be developed with several third party reporting and charting tools, such as Crystal Reports and Microsoft Access.



On-line Help

Need help and no time to read the manual? Predator MDC includes on-line help with concise and up-to-date documentation.

Service and Support

Who will help set me up and keep me operational? Predator Software products and services are available through a global network of 100 value-added resellers. As part of the Predator family, they can provide the expertise necessary to maximize your productivity with Predator MDC.

System Requirements

Windows® 2000/XP and 2003 Server

- Intel® Pentium®-based processor or equivalent
- 128 MB RAM
- 500 MB hard disk space

CONTACT INFORMATION

Shop Floor Automations, Inc. Corporate Offices:
 5360 Jackson Drive, Suite 202
 La Mesa, CA 91942
 Phone: (619) 461-4000
 Toll Free: (877) 611-5825
 Fax: (619) 461-5918
 Web: www.shopfloorautomations.com

SFA is an Authorized Predator Distributor and Service Center



Predator Software, The Predator logo, Geared for Manufacturing, Predator MDC, Predator CNC Editor, Predator DNC, Predator Desktop, Predator Gage Crib, Predator Grizzly Cable, Predator Tool Crib, Predator Traveler and Predator Virtual CNC are trademarks of Predator Software Inc. All other trademarks are the property of their respective owners

© 2000-2002 Predator Software Inc. All rights reserved. Printed in the USA.

