

Cloud Machine Monitoring

Scytec Data Xchange



Features and Benefits

- * No servers to purchase or maintain
- * Data transmitted securely using SSL encryption
- * Low upfront costs
- * Low monthly fees
- * No long term commitment
- * No need to pay for a separate pilot program
- * Ethernet based Fanuc Focas and MTConnect
- * Track multiple types of cycle time
- * Real-time dashboard
- * No licensing keys
- * Multi-plant support
- * Multiple languages
- * Configurable rules to determine cycle status



No Large Upfront Costs or Long Term Commitments

Equipment monitoring available 24-7 with a low setup fee and low monthly payments. No long term commitments are required, no minimum size order.

Fanuc Focas and MTConnect Ethernet Support

Scytec DataXchange supports Ethernet based protocols such as Fanuc Focas and MTConnect greatly reducing or eliminating hardware at each piece of equipment.

Track Multiple Types of Cycle Time

Scytec DataXchange has the ability to track multiple types of cycle time. For example, cycle time can be tracked from a hardware adapter and through MTConnect or Fanuc Focas. Reporting on metrics such as utilization and efficiency can then be run on both sets of data and the two can be compared. Another example is to collect spindle time along with load to unload time.

Real-Time Configurable Dashboard

A user configurable dashboard can display a variety of information, all updating in real time. The views are configurable on a user or a user group bases allowing the dashboard to not only be used for visual manufacturing on the shop floor, but also as a tool for management as well as the maintenance and quality departments.

View the Data From Anywhere

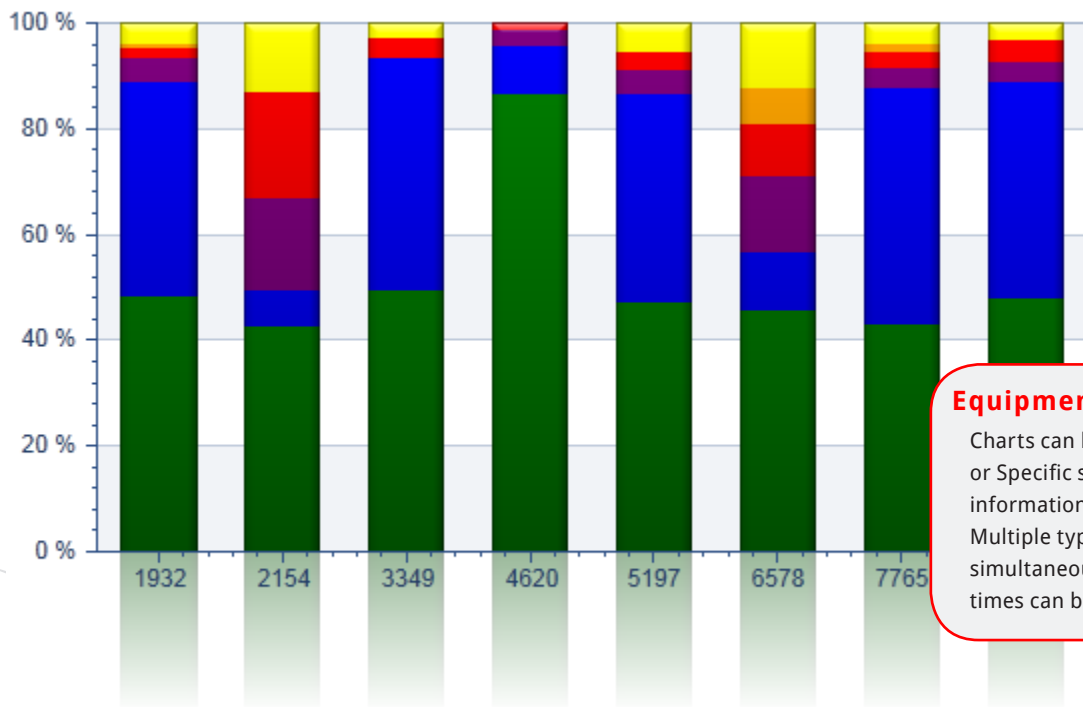
Storing the data securely in the Cloud along with unlimited reporting licenses allows the data to be viewed from anywhere at any time.

Pricing

Starting at just \$45 per month per machine. Mix and match licesing level. There is a one time setup fee per account and then a monthly fee per piece of equipment. After 5 pieces of equipment discounts are provided for each additional piece of equipment added to the account.

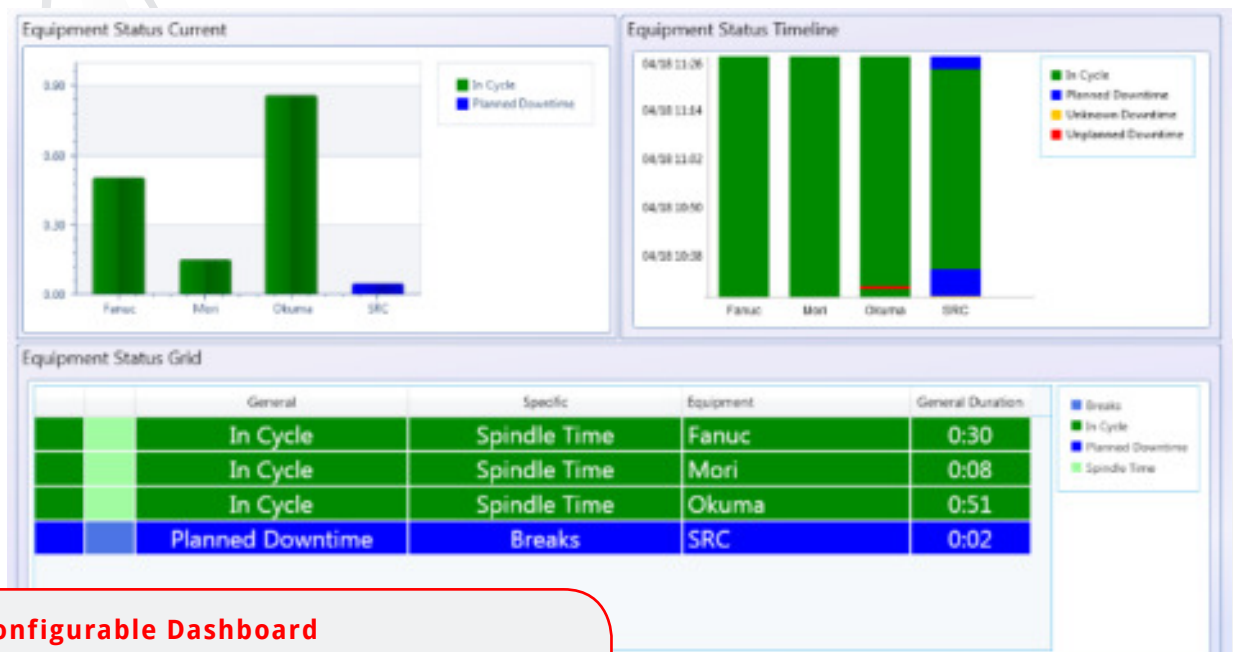
Apple and Android devices

Apple iPad and iPhone along wiht Android phone and tablet apps are available for real time and historical charting.



Equipment Status

Charts can be configured to show General or Specific statuses displaying summary information or a very detailed breakdown. Multiple types of cycle time can be recorded simultaneously and then any of the cycle times can be used to calculate utilization.



Real-Time Configurable Dashboard

The dashboard can be configured to present the data many different ways. One view can be displayed, or many, and an unlimited amount of screens defined. Screens can be configured to rotate, filtered by certain equipment, or by certain statuses making the Real Time Viewer a powerful visual management tool.

Shop Floor Automations, Inc.
5360 Jackson Drive, Suite 202
La Mesa, CA 91942-6003

Phone: (619) 461-4000
Toll Free: (877) 611-5825
Fax: (619) 461-5918

Web: www.shopfloorautomations.com
Email: sales@shopfloorautomations.com

